

Prophylactic Antibiotic Regimen Selection for Surgery

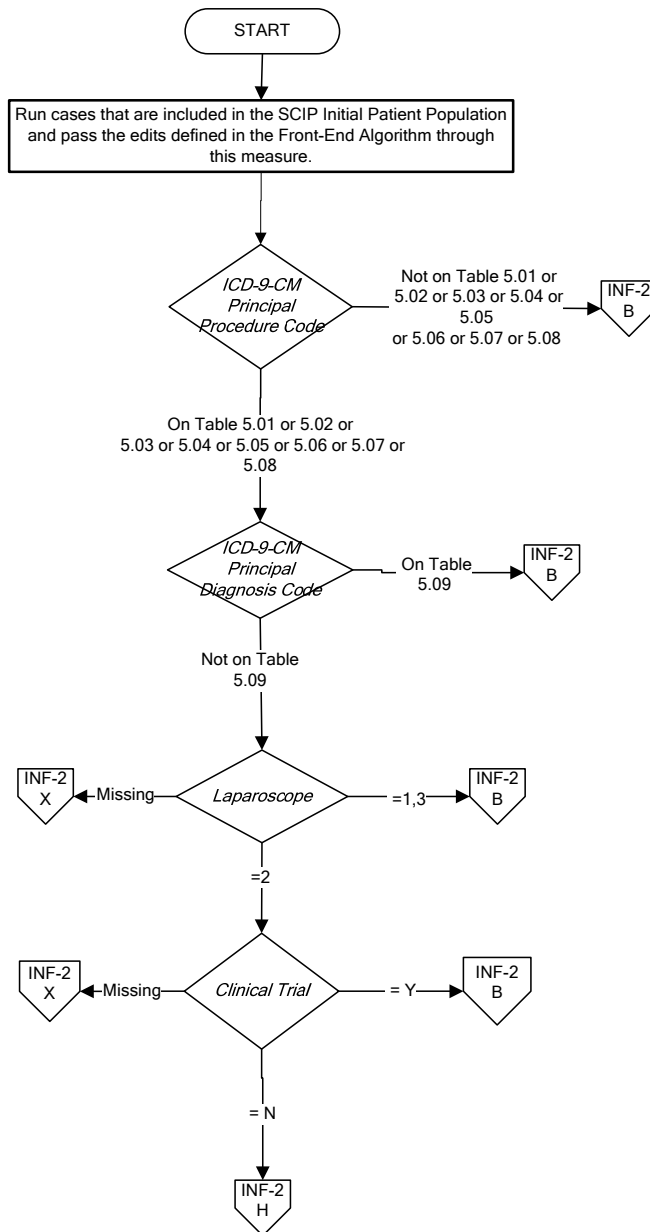
Surgical Procedure	Approved Antibiotics
CABG, Other Cardiac or Vascular	Cefazolin, Cefuroxime, Table 3.1 or Vancomycin** Table 3.8 If β -lactam allergy: Vancomycin* Table 3.8 or Clindamycin* Table 3.9
Hip/Knee Arthroplasty	Cefazolin or Cefuroxime Table 3.2 or Vancomycin** Table 3.8 If β -lactam allergy: Vancomycin* Table 3.8 or Clindamycin* Table 3.9
Colon	Cefotetan, Cefoxitin, Ampicillin/Sulbactam Table 3.5, or Ertapenem† Table 3.6b OR Cefazolin or Cefuroxime Table 3.2 + Metronidazole Table 3.6a If β -lactam allergy: Clindamycin Table 3.9 + Aminoglycoside Table 2.11, or Clindamycin Table 3.9 + Quinolone Table 3.12, or Clindamycin Table 3.9 + Aztreonam Table 2.7 OR Metronidazole Table 3.6a with Aminoglycoside Table 2.11, or Metronidazole Table 3.6a + Quinolone Table 3.12
Hysterectomy	Cefotetan, Cefazolin, Cefoxitin, Cefuroxime, or Ampicillin/Sulbactam Table 3.7 If β -lactam allergy: Clindamycin Table 3.9 OR Metronidazole Table 3.6a
Special Considerations	*For cardiac, orthopedic, and vascular surgery, if the patient is allergic to β -lactam antibiotics, Vancomycin or Clindamycin are acceptable substitutes. **Vancomycin is acceptable with a physician/APN/PA documented justification for its use (see data element <i>Vancomycin</i>) † A single dose of ertapenem is recommended for colon procedures.

SCIP-INF-2: Prophylactic Antibiotic Selection for Surgical Patients

Numerator: Number of surgical patients who received prophylactic antibiotics recommended for their specific surgical procedure.

Denominator: All selected surgical patients with no evidence of prior infection.

Variable Key:
Antibiotic Days I
Antibiotic Timing I
Antibiotic Days II
Antibiotic Timing II
Surgery Days
Abxday Flag



Stratification Table:

Set#	Stratified By	*Principal Procedure Code (Allowable Value)
SCIP-INF2a	Overall Rate	**
SCIP-INF2b	CABG	Table 5.01
SCIP-INF2c	Other Cardiac Surgery	Table 5.02
SCIP-INF2d	Hip Arthroplasty	Table 5.04
SCIP-INF2e	Knee Arthroplasty	Table 5.05
SCIP-INF2f	Colon Surgery	Table 5.03
SCIP-INF2g	Hysterectomy	Table 5.06 Or 5.07
SCIP-INF2h	Vascular Surgery	Table 5.08

* This refers to the data element 'ICD-9-CM Principal Procedure Code'. Each case will be stratified according to the principal procedure code, after the Category Assignments are completed and the overall rate is calculated.

** No allowable value exists for the overall rate. It includes all procedures on Tables 5.01 to 5.08.

